

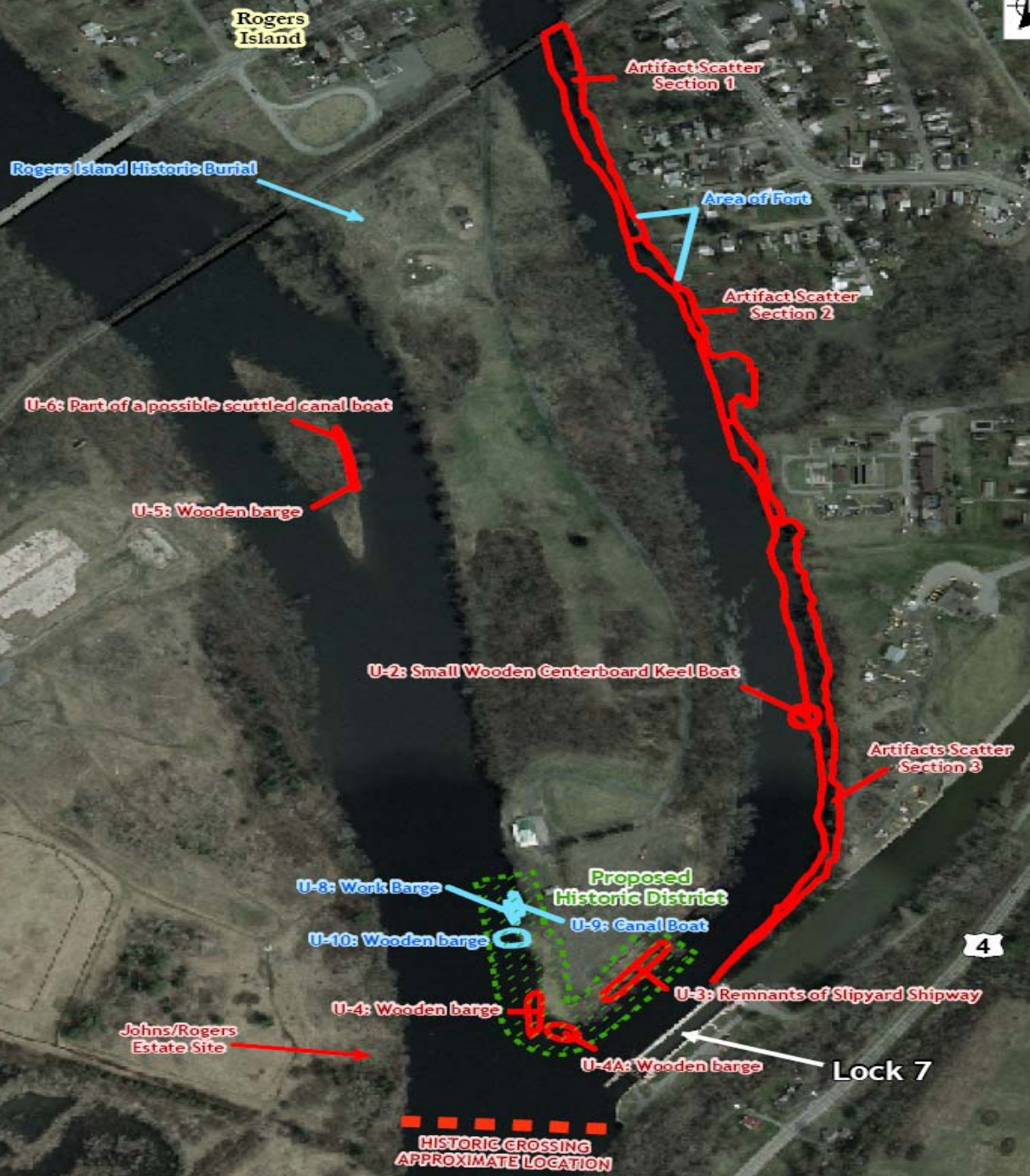
Hudson River PCBs Superfund Site



**Community Advisory Group Meeting
March 27, 2008**



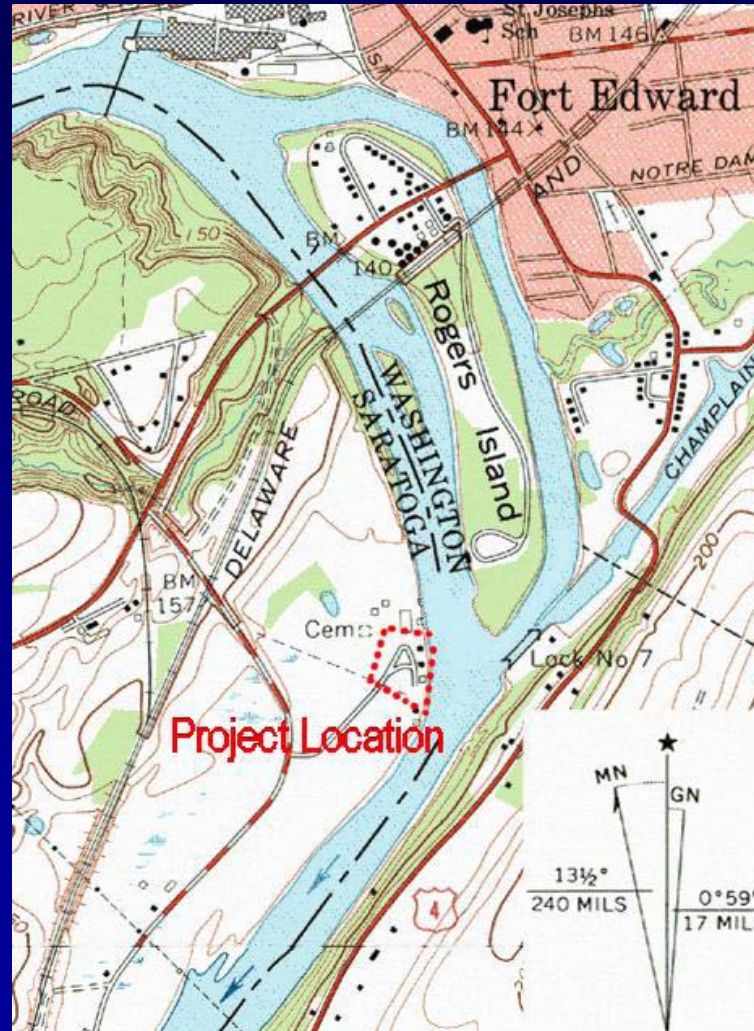
Selected Historic Properties in Phase 1 Dredge Areas



Work Support Marina Terrestrial Archaeological Resource

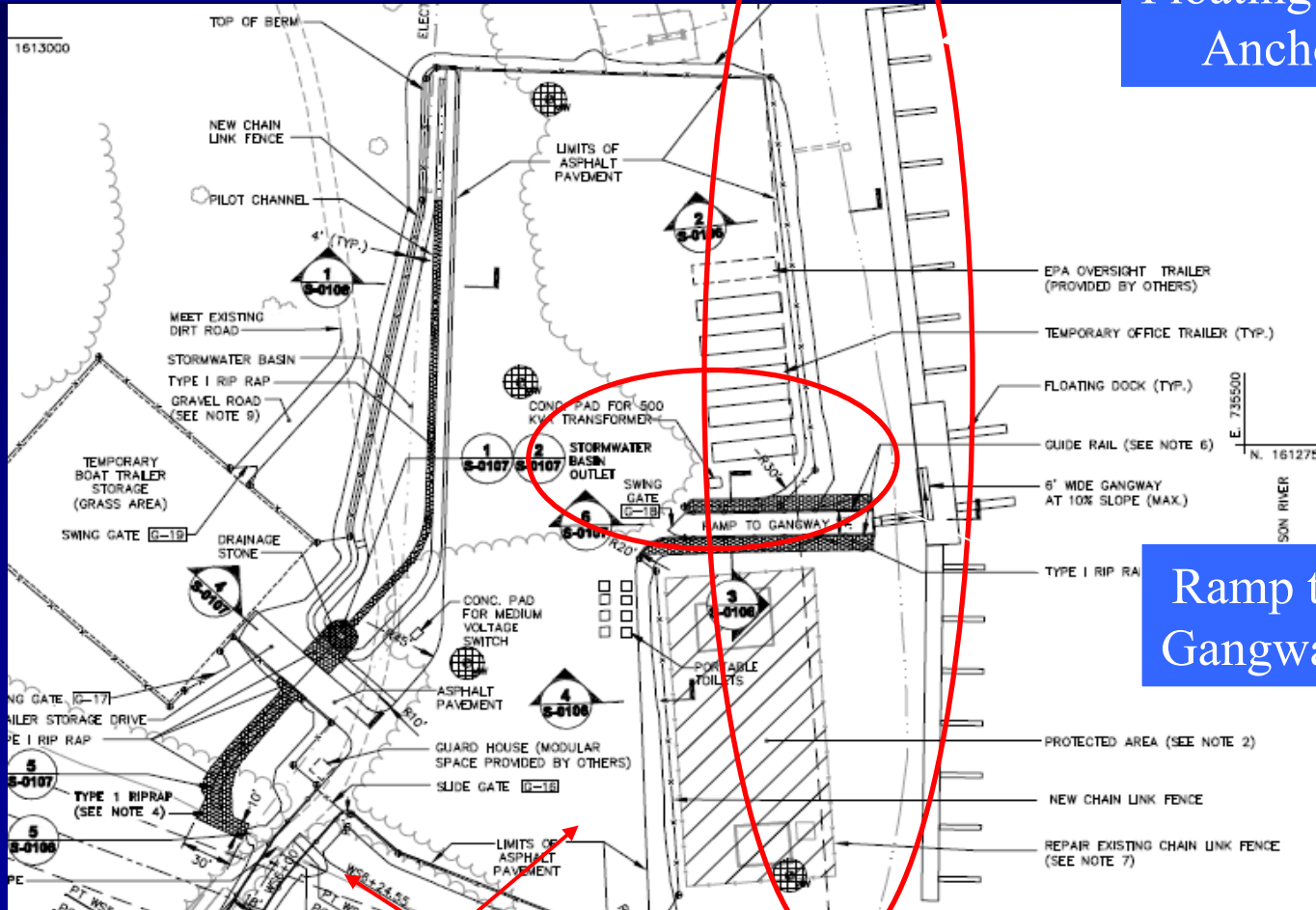
- **Work Support Marina (Jones/Rogers Estate Site)**
 - Site is eligible
 - Adverse effect due to possible ramp construction
 - Report under review

Work Support Marina Design Revisions



Revised Site Plan

Floating Dock
Anchors



Ramp to
Gangway

Fencing

Summary of Mitigation Tasks

- **Historic resource inventory** of sections of the canal including the area around the dewatering facility.
- **Underwater resource U-2** The data recovery may entail establishment of a mapping grid; excavation by diver - controlled dredge (hydraulic or induction) to further expose the vessel; screening of the dredged sediment; mapping of large artifacts; examination of the adjacent bottom for additional remains of the vessels; photography and videography; and artifact curation.

Summary of Mitigation Tasks (Cont'd)

- Proposed Rogers Island Historic Riverine Industrial and Transportation District
- Museum exhibits dedicated to the history of the riverine culture of the Upper Hudson River with specific reference to the proposed Rogers Island Historic Riverine Industrial and Transportation District
- Underwater Artifact Scatter curation and exhibition
- Collection of oral histories concerning maritime industrial and transportation activities associated with historic Hudson River corridor
- Jones/ Rogers Estate Site archaeological data recovery and compilation of an appropriate Phase III report

Update on Waterline



Water Supply Halfmoon and Waterford

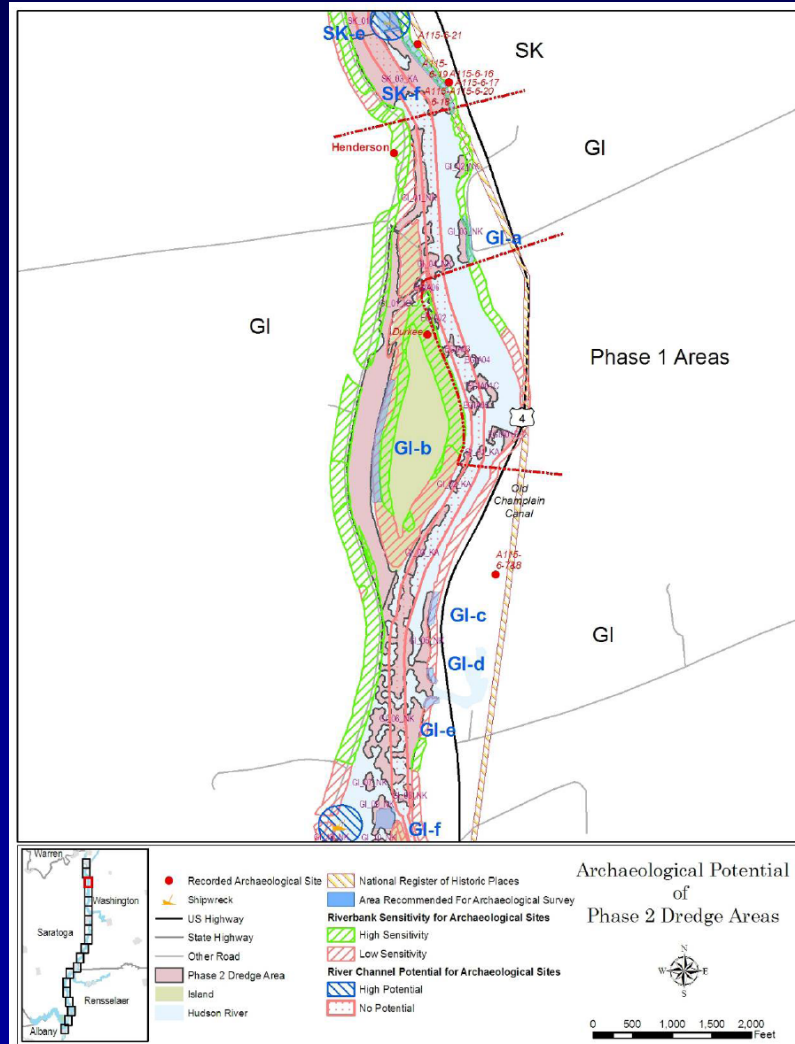
- Supply alternate water from Troy to communities during dredging
- Moving forward with design related investigation
- Investigations include consideration of cultural resources

Cultural Resources

- Phase 1A research underway
- Phase 2 Studies being completed along alignment
 - Shovel tests
 - Test trenches



Phase 2 Areas



Phase 2 Key Points

- GE has provided report
- Report is under review
- Meeting with NPS

Phase 2 Preliminary Cultural Resources Data

- Geophysical studies in Phase 2 dredge area (magnetometer and side scan sonar) have identified 13 submerged cultural resources including possible wrecks and underwater cribbing.
- 112 cultural resources have been identified along the shoreline. These include prehistoric archaeological sites, ferries, bridges, canals, shipyards, former historic structures, and Revolutionary War sites.
- 8,000 sediment cores were retrieved between 2002 and 2006; these yielded 291 cultural items from 149 cores (wood, coal, glass, sherds, iron, rubber, plastic).

Phase 2 Preliminary Cultural Resources Data (Cont'd)

- Historic research, cores, and geophysical studies permitted to formulate a preliminary protocol defining areas of No Archaeological Potential, Low Archaeological Potential, and High Archaeological potential.
- 53 unprotected sections of the shoreline that may be affected by dredging have been defined as High Potential Areas and will be subjected to archaeological investigations.
- 24 in- river areas have been identified as high potential areas and will be subjected to archaeological investigations.
- Additional areas of archaeological sensitivity may be identified by further remote sensing studies (multi- beam bathymetry).

Next Steps/Follow Up Items

- **Draft MOA**
- **Ongoing Consultation with SHPO**
- **Community Outreach/Consulting Parties Meeting**
- **Marina Data Recovery Work Plan (Under Review)**
- **Waterline Field Work Continues**

Questions / Comments

